

XT1086

Constant Coverage HF Horn

KeyFeatures

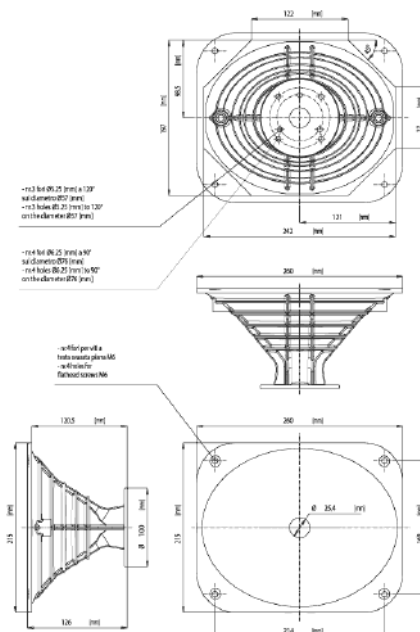
- 1 inch throat entry
- Unique Eighteen Sound elliptical shape (ESS)
- Flat front and compact size
- Die-cast aluminum construction for best heat transfer
- Uniform on-axis and off-axis frequency response
- 80° x 60° horizontal and vertical constant coverage
- Improved structure strength by exclusive computer aided vibrational analysis

Description

Featuring the unique Eighteen Sound elliptical shape (ESS technology), the XT1086 Constant Coverage High Frequency Horn has been designed for use in sound systems where the highest sound quality is required. With a 1 inch throat entry, the XT1086 has been designed to match the Eighteen Sound 1 inch exit high frequency compression drivers perfectly. The XT1086 maintains nominal 80° Horizontal x 60° Vertical pattern control. It provides consistent on-axis and off-axis frequency response from 1,4kHz to 16kHz in the horizontal plane and from 1,5kHz to 16kHz in the vertical plane. Horn directivity is constant from 1,4kHz. Thanks to its compact vertical mouth dimension, the XT1086 can easily be staked vertically when lower frequency control is required. The main innovation that the XT1086 introduces, is the improved external shape, providing high structural rigidity. This has been developed using exclusive a computer aided vibration analysis system. This product provides low distortion and a spherical wave-front, avoiding reflections and other disadvantages usually associated with diffraction horns. The die-cast aluminum construction provides optimum heat transfer, lowering the driver power compression and improving its general power handling capability.

Models

Model	Code	Info
421086000	421086000	



XT1086

Constant Coverage HF Horn

General Specifications

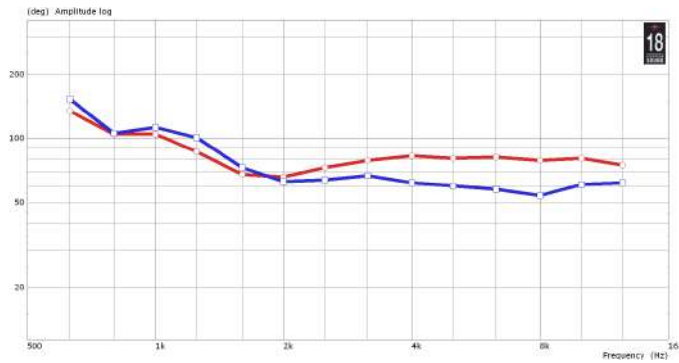
Throat Diameter	25,4 mm (1 in)
Horizontal Coverage -6db	80°(1 - -8) average range(1,6kHz - 12,5kHz) (1 in)
Vertical Coverage -6db	60° (18 - -7) average range(1,6kHz - 12,5kHz)
Directivity Index	10 dB (1.3 - -0,4) average range (1.6kHz - 12.5kHz)
Usable Frequency Range	Above 800 Hz
Recomm. Xover Frequency	1200 Hz or more
Sensitivity	110 dB
Frequency Range	1200 Hz - 20kHz
Material	Die-cast aluminum

Mounting information

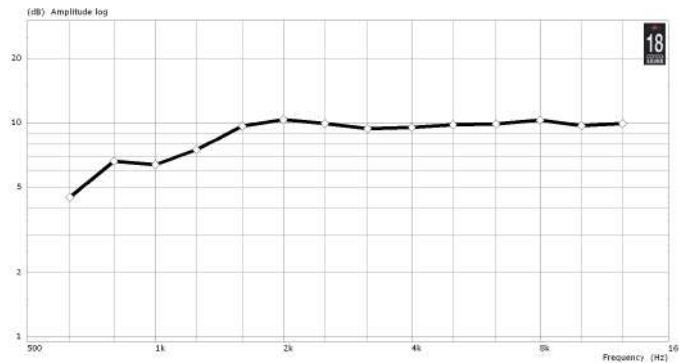
Template:_detail_t_mountinghorns.html

Notes

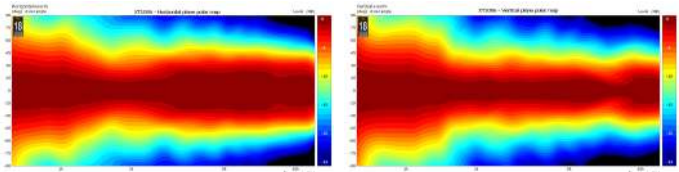
1) Sensitivity is measured at 1W input on ND1090 compression driver rated impedance at 1m on axis from the mouth of the horn, averaged between 1kHz and 4 kHz.



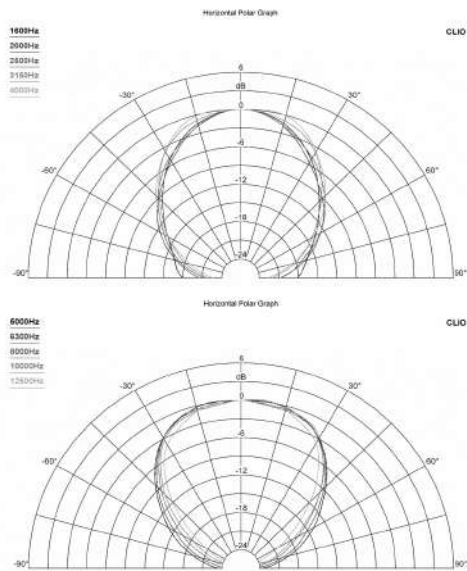
HORIZONTAL BEAMWIDTH - RED PLOT - VERTICAL BEAMWIDTH - BLUE PLOT - A



DIRECTIVITY INDEX - B Horizontal and Vertical Polar Directivity Map



HORIZONTAL 1/3 OCTAVE POLAR PLOTS



VERTICAL 1/3 OCTAVE POLAR PLOTS

